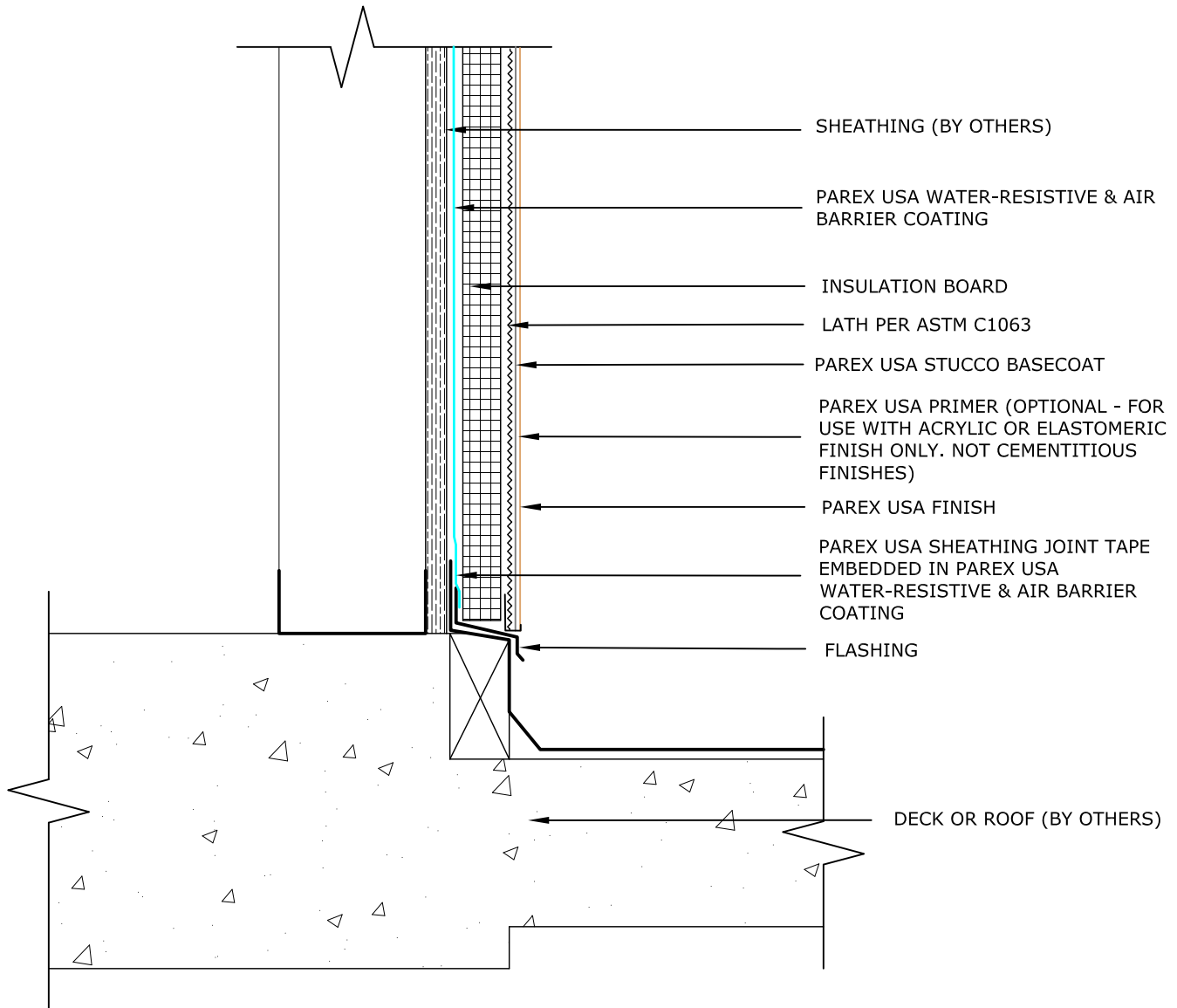


PAREX USA STUCCO ASSEMBLIES



R1.02 HE / TERMINATION AT DECK FLASHING

PAREX ARMOURWALL 100 & 300, LAHABRA FASTWALL 100 & 300, ELREY FASTWALL & FIBER-47, TEIFS ONE COAT & SCRATCH & BROWN

HE
 KRAK-SHIELD
 WATERMASTER

NOTE:

1. For means of drainage see Parex USA HE Stucco Assembly details 113, 114, 115, & 116.
2. Drainage may be omitted for 300 HE Stucco Assemblies except when selected by the specifier.
3. Krak-Shield (not shown) When specified see related details.
4. Refer to Parex USA specifications specified basecoat products and thickness.

Disclaimer: The design specifications and construction shall comply with all local building codes and standards. Parex USA installation guidelines are for general information and guidance only and Parex USA specifically disclaims any liability for the use of this design, and for design engineering, or workmanship of any project. The assembly shall be designed to prevent condensation within the assembly. The designer and the user shall provide final drawings and specifications. Products shown other than those manufactured by Parex USA are shown for clarity of the Parex USA product only. Contact the Manufacturer for installation instructions.
 Technical Support: 1-800-226-2424 www.parexusa.com