

## Parex USA Water Resistive Barriers Details

Cold-Fluid Applied Waterproofing  
CSI SECTION 07 14 16

Fluid-Applied Membrane Air Barriers  
CSI SECTION 07 27 26

## WEATHER TECH WRBs

Parex USA installation guidelines are for general information and guidance only and Parex USA specifically disclaims any liability for the use of this design, and for design engineering, or workmanship of any project. The assembly shall be designed to prevent condensation within the assembly. The designer and the user shall provide final drawings and specifications. Products shown other than those manufactured by Parex USA are shown for clarity of the Parex USA product only. Contact the Manufacturer for installation instructions.

Note: To ensure a continuous air barrier across the building envelope, a continuous air seal should be made at each substrate change, joints/gaps, penetrations and dissimilar material terminations. There must be a consideration of the Designer in the overall wall assembly design. Stucco claddings and any cladding using a mortar bed require the use of a slipsheet installed over the Water-Resistive & Air Barrier Coating to prevent adhesion to the stucco.

These details are not to be used by themselves, and do not constitute design instructions for Weather Tech WRBs application. These details must be used in conjunction with Parex USA current product specifications, product data sheets, and application instructions.

Any details shown are strictly for the purpose of illustrating typical Weather Tech WRBs. Any other materials shown in any details are incidental to the details, and are included only for clarity of the Weather Tech WRBs. Please consult with the manufacturers and/or suppliers of any separate materials for their product specifications and applications instructions.

For specific details with EIFS or stucco, see the specific assembly details on [parex.com](http://parex.com), [Teifs.com](http://Teifs.com), [elrey.com](http://elrey.com) or [lahabrastucco.com](http://lahabrastucco.com)

Where site or design conditions not shown in these details are present, or any unusual design is involved, please consult with Parex USA Technical Department for assistance.

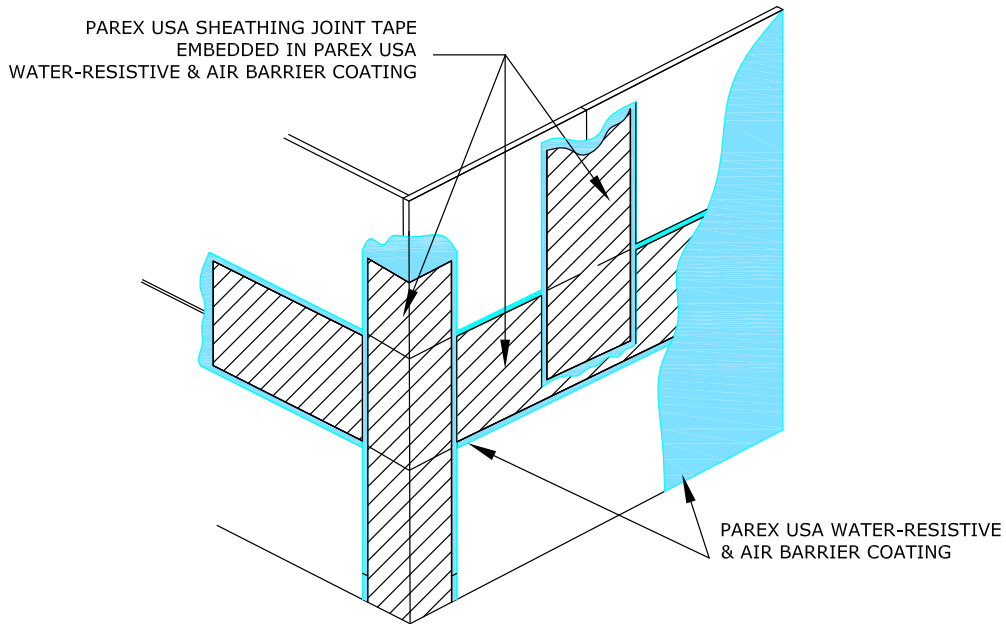
PAREX USA DOES NOT WARRANT THE FITNESS OF SUITABILITY OF THESE DETAILS FOR CONSTRUCTION, OR ASSUME ANY LIABILITY FOR USE OF THESE DETAILS. IT IS THE SOLE RESPONSIBILITY OF ANY ARCHITECTURAL OR CONSTRUCTION INDUSTRY PROFESSIONAL TO APPLY THEIR PROFESSIONAL KNOWLEDGE IN UTILIZING THE INFORMATION CONTAINED IN THESE DETAILS.



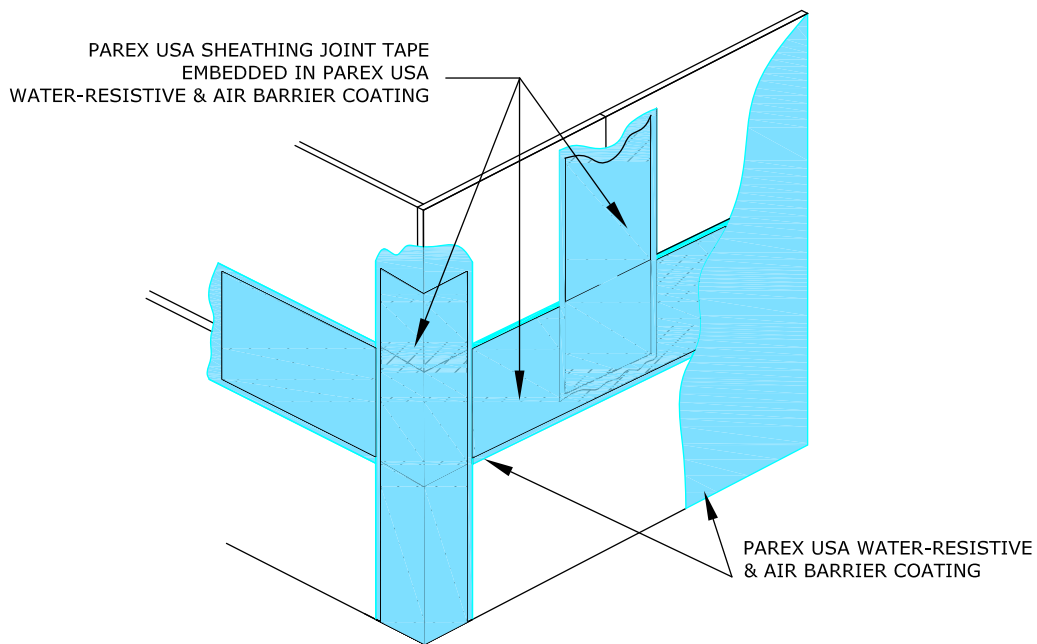


# CONTENTS Parex USA WRB System Details

SUBJECT	DETAIL	PAGE	
<b>GENERAL CONSTRUCTION</b>	WRB 1.01 SHEATHING JOINT TREATMENT .....	4	
	WRB 1.02 ON MASONRY WITH PAREX USA STUCCO LEVEL COAT.....	5	
	WRB 1.03 ON MASONRY .....	5	
<b>TERMINATIONS AT FOUNDATIONS</b>	WRB 1.04 FOUNDATION .....	6	
	WRB 1.05 TERMINATION AT WALL BASE FLASHING.....	6	
	WRB 1.06 TERMINATION AT FOUNDATION FLASHING .....	7	
	WRB 1.07 TERMINATION AT STUCCO WEEP SCREED ON FOUNDATION.....	7	
	WRB 1.08 TERMINATION AT THROUGH-WALL FLASHING FOUNDATION MASONRY LEDGE .....	8	
	WRB 1.09 TERMINATION AT THROUGH-WALL FLASHING AND FOUNDATION .....	8	
	WRB 1.10 SIDEWALK FLOORLINE FOUNDATION .....	9	
	<b>WINDOW AND DOOR TERMINATIONS</b>	WRB 1.11 ROUGH OPENING TREATMENT – 1 OF 5.....	9
		WRB 1.12 ROUGH OPENING TREATMENT – 2 OF 5.....	10
		WRB 1.13 ROUGH OPENING JAMB & SILL – 3 OF 5.....	10
WRB 1.14 ROUGH OPENING JAMB & SILL – 4 OF 5.....		11	
WRB 1.15 ROUGH OPENING TREATMENT – 5 OF 5.....		11	
WRB 1.16 TERMINATION AT SILL PAN FLASHING END DAM.....		12	
WRB 1.17 HEAD FLASHING .....		12	
WRB 1.18 SEAL AT MASONRY HEAD FLASHING .....		13	
<b>EXPANSION JOINTS</b>		WRB 1.19 EXPANSION JOINT A .....	13
	WRB 1.20 EXPANSION JOINT B .....	14	
<b>ROOFS</b>	WRB 1.21 FLOOR LINE DEFLECTION JOINTS.....	14	
	WRB 1.22 TERMINATION AT ROOFS .....	15	
	WRB 1.23 LOW PARAPET HIGH WALL INTERSECTION – 1 OF 3 .....	15	
	WRB 1.24 LOW PARAPET HIGH WALL INTERSECTION – 2 OF 3 .....	16	
	WRB 1.25 LOW PARAPET HIGH WALL INTERSECTION – 3 OF 3 .....	16	
<b>PENETRATIONS</b>	WRB 1.26 SEAL AT DUCT PENETRATION.....	17	
	WRB 1.27 SEAL AT PIPE PENETRATION .....	17	
	WRB 1.28 TYPICAL APPLICATION AT BRICK TIES.....	18	
<b>TRANSITIONS TO DISSIMILAR WATER-RESISTIVE BARRIERS</b>	WRB 1.29 HORIZONTAL TRANSITION TO NON-ADHERED WATER-RESISTIVE BARRIER SHEET ABOVE .....	18	
	WRB 1.30 HORIZONTAL TRANSITION TO NON-ADHERED WATER-RESISTIVE BARRIER SHEET ABOVE.....	19	
	WRB 1.31 VERTICAL TRANSITION TO NON-ADHERED WATER-RESISTIVE BARRIER SHEET .....	19	

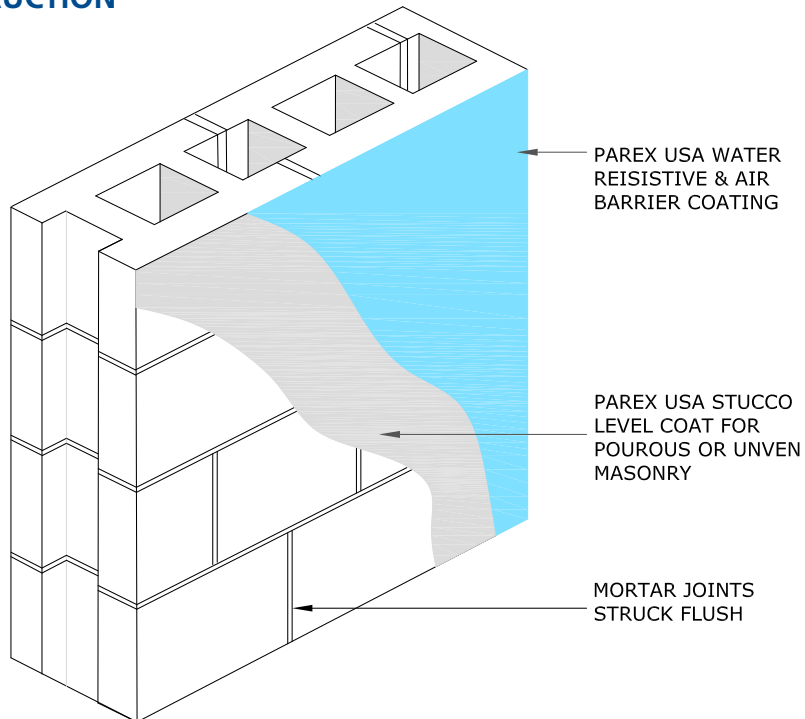


**WRB 1.01A SHEATHING JOINT TREATMENT**

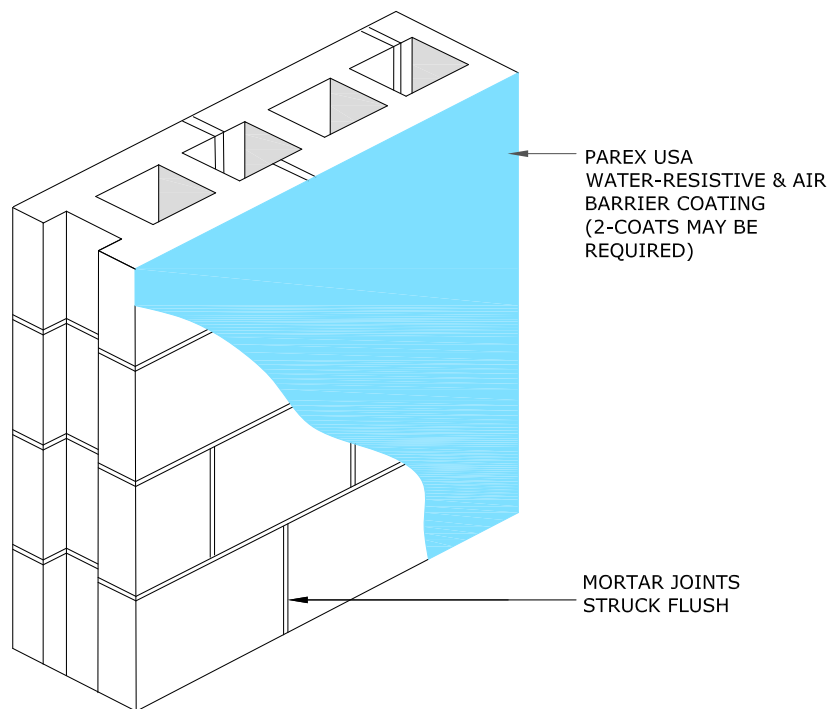


**WRB 1.01B SHEATHING JOINT TREATMENT**

## GENERAL CONSTRUCTION

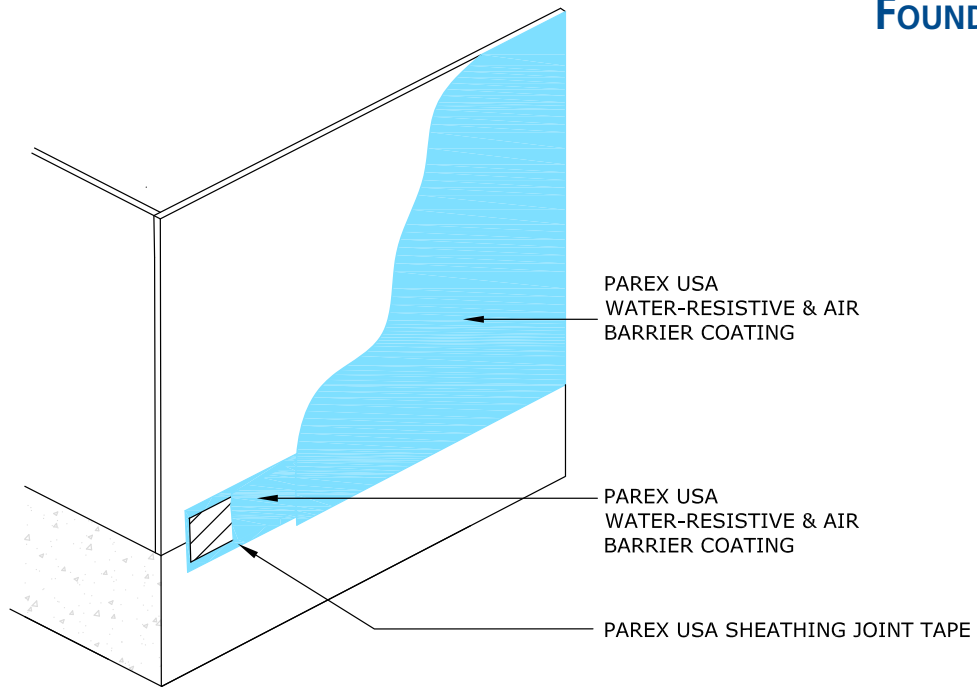


**WRB 1.02 ON MASONRY WITH PAREX USA STUCCO LEVEL COAT**



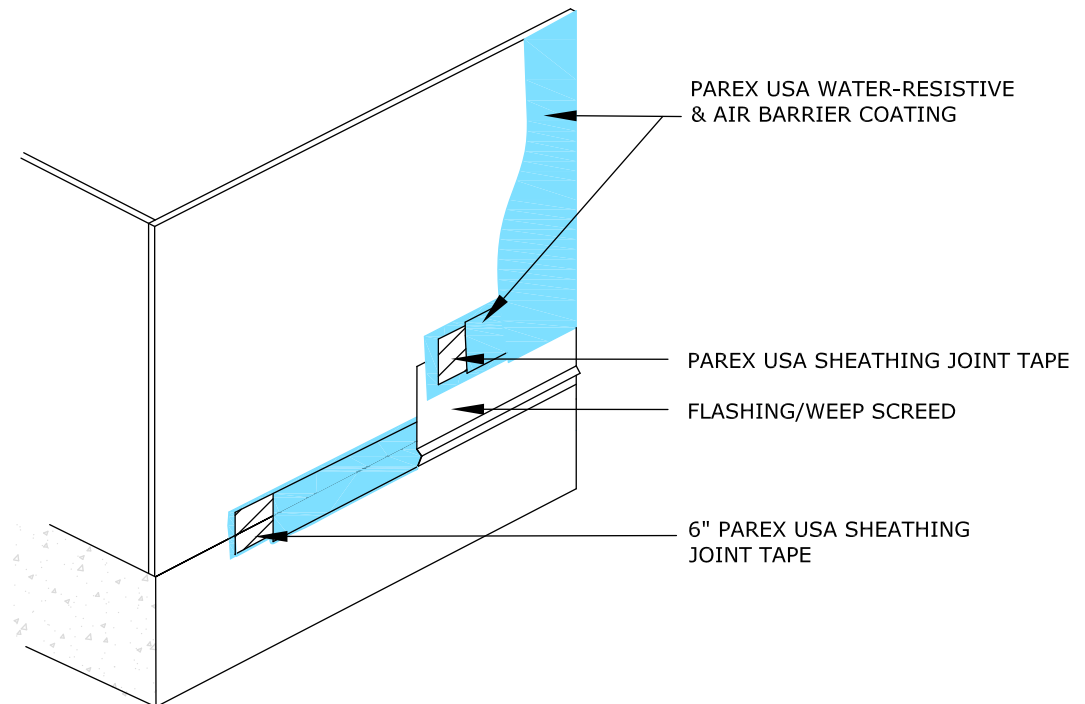
**WRB 1.03 ON MASONRY**

**Note:**  
Parex USA Flashing Membrane/Primer may be used as an alternative to Parex USA Reinforced Water Resistant and Air Barrier coating.



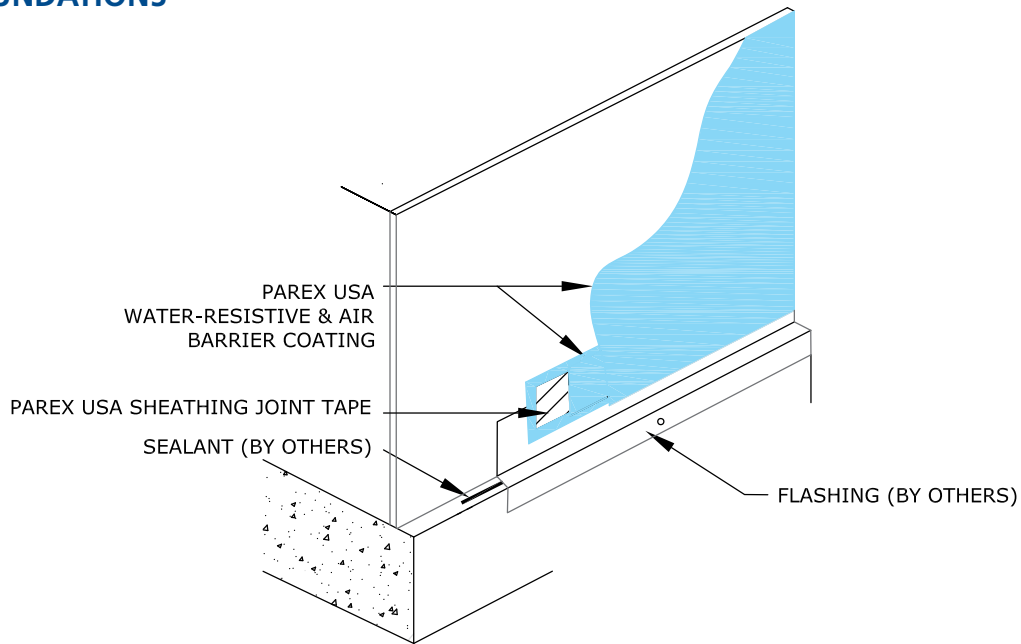
**WRB 1.04 FOUNDATION**

**Note:**  
Parex USA Flashing Membrane/Primer may be used as an alternative to Parex USA Reinforced Water Resistant and Air Barrier coating.



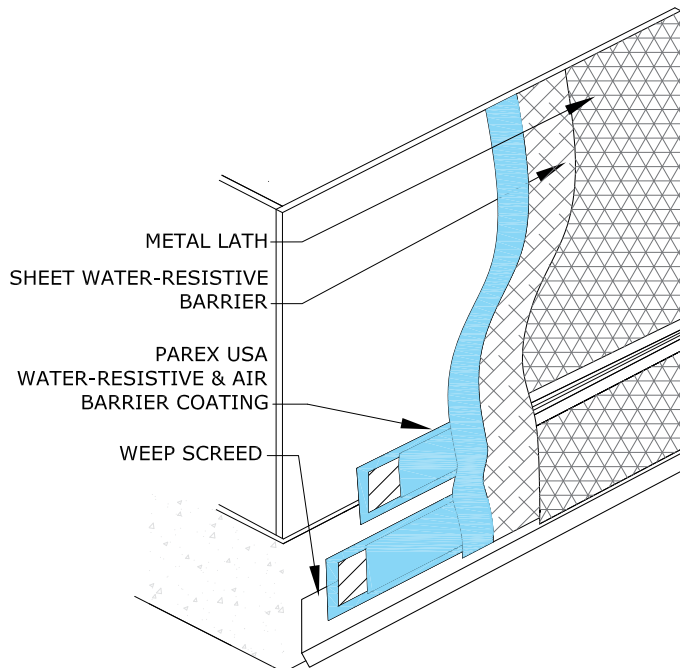
**WRB 1.05 TERMINATION AT WALL BASE FLASHING**

## TERMINATIONS AT FOUNDATIONS



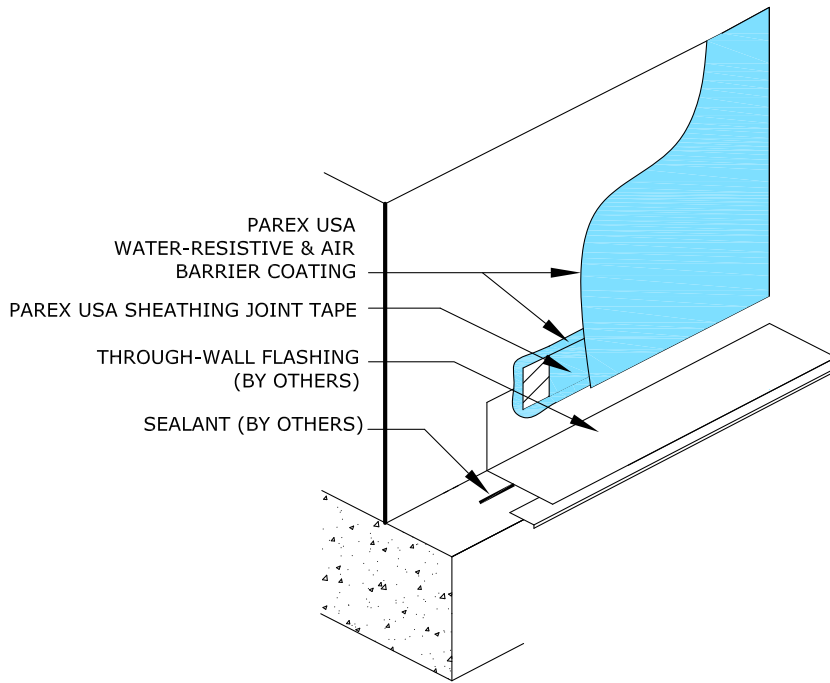
**Note:**  
Parex USA Flashing Membrane/Primer may be used as an alternative to Parex USA Reinforced Water Resistant and Air Barrier coating.

**WRB 1.06 TERMINATION AT FOUNDATION FLASHING**

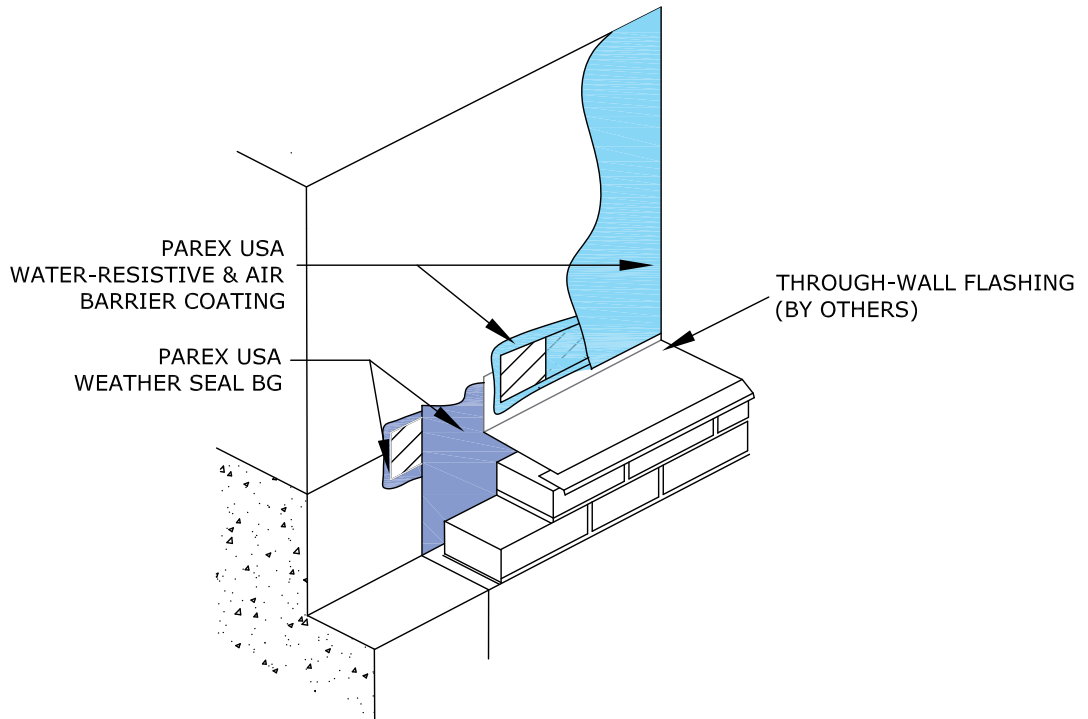


**Note:**  
Vapor permeable Water-resistive barrier/ slip sheet, minimum #15 Grade D building paper, required behind claddings such as portland cement stucco and adhered masonry veneer.

**WRB 1.07 TERMINATION AT STUCCO WEEP SCREED ON FOUNDATION**



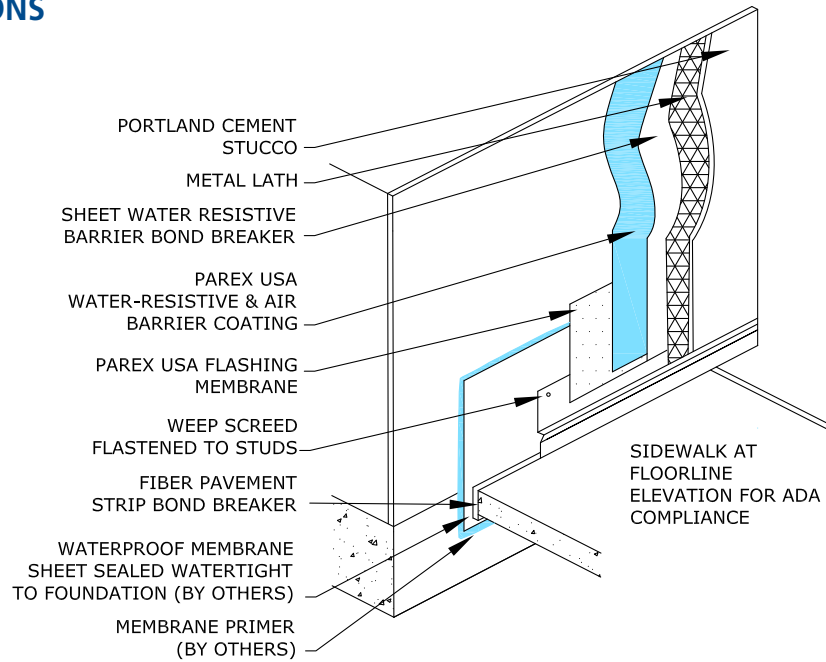
**WRB 1.08 TERMINATION AT THROUGH-WALL FLASHING FOUNDATION MASONRY LEDGE**



**WRB 1.09 TERMINATION AT THROUGH-WALL FLASHING AND FOUNDATION**



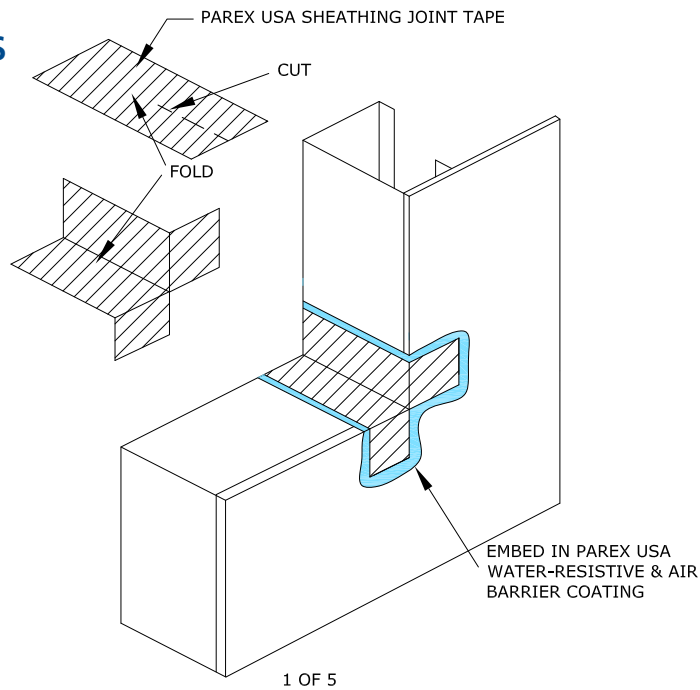
## TERMINATIONS AT FOUNDATIONS



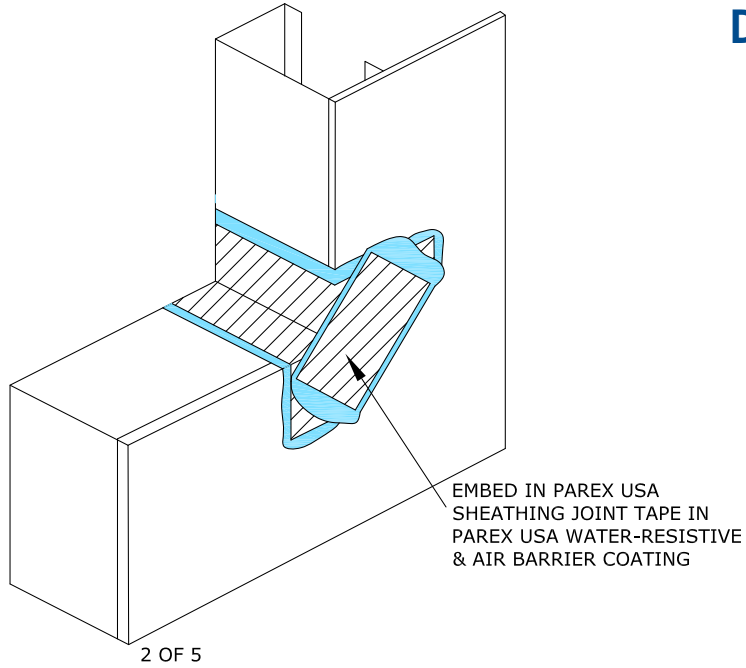
**Note:**  
 Requires building officials approval.  
 Weep screed does not extend below soul plate due to ADA compliance sidewalk.  
 Waterproof membrane replaces weep screed counterflashing function.

**WRB 1.10 SIDEWALK FLOORLINE FOUNDATION**

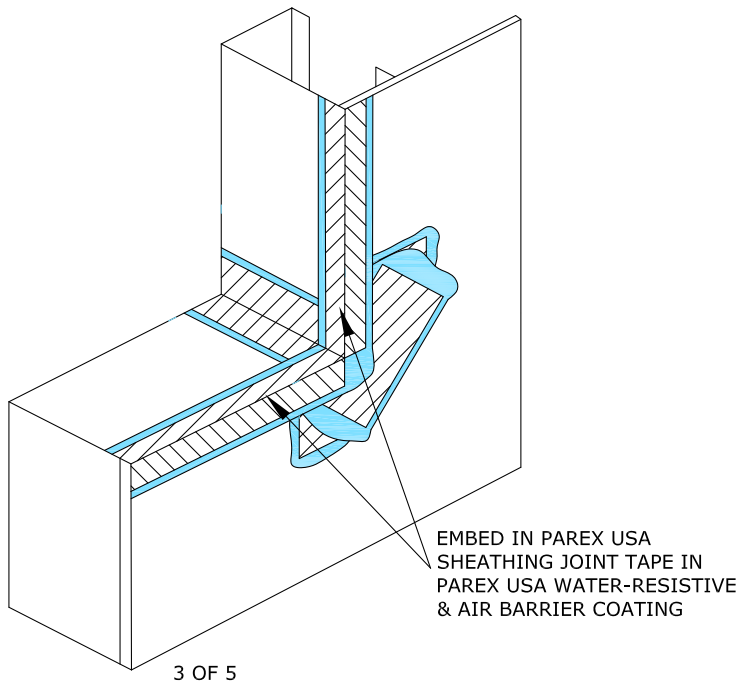
## WINDOW AND DOOR TERMINATIONS



**WRB 1.11 ROUGH OPENING TREATMENT – 1 OF 5**

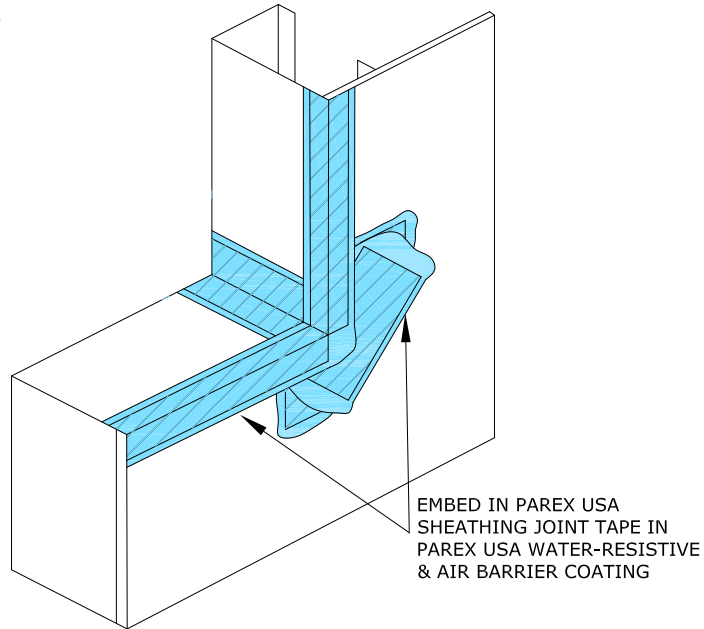


**WRB 1.12 ROUGH OPENING TREATMENT – 2 OF 5**



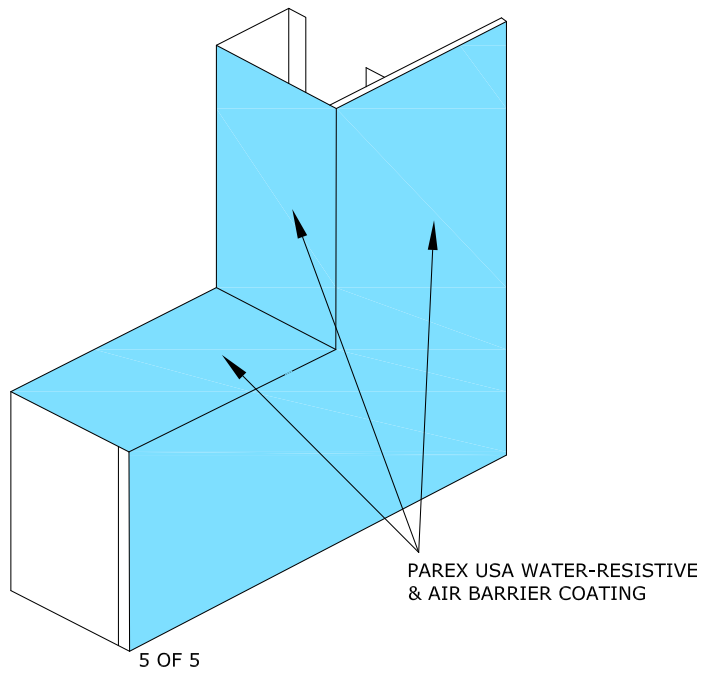
**WRB 1.13 ROUGH OPENING JAMB & SILL – 3 OF 5**

## WINDOW AND DOOR TERMINATIONS



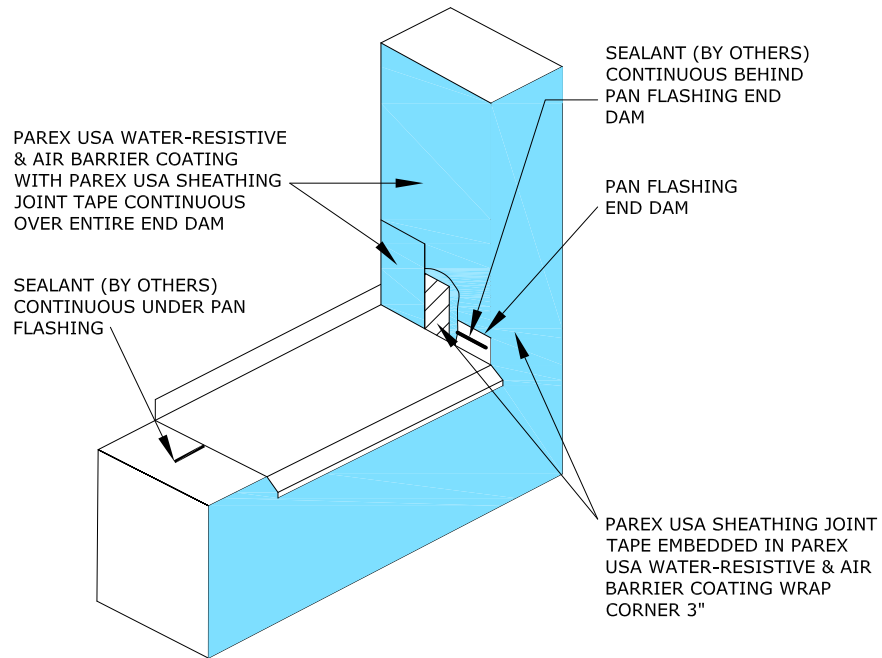
4 OF 5

### **WRB 1.14 ROUGH OPENING JAMB & SILL – 4 OF 5**

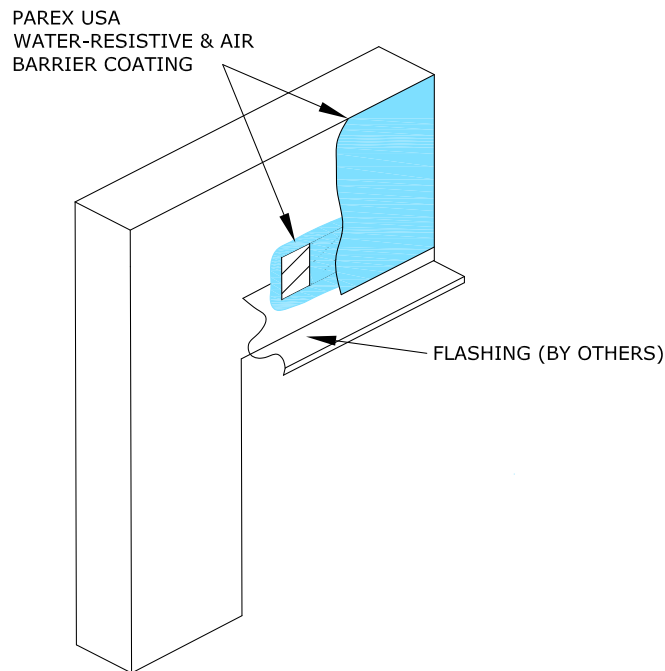


### **WRB 1.15 ROUGH OPENING TREATMENT – 5 OF 5**

**Note:**  
Provide end /back dams  
as required. Install pan  
flashing into wet sealant  
to create air seal.

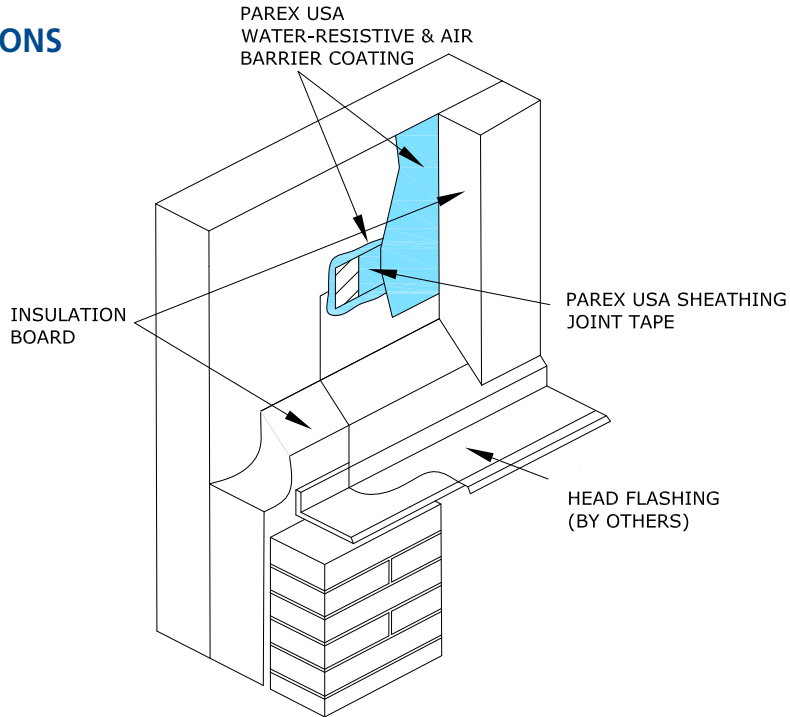


**WRB 1.16 TERMINATION AT SILL PAN FLASHING END DAM**



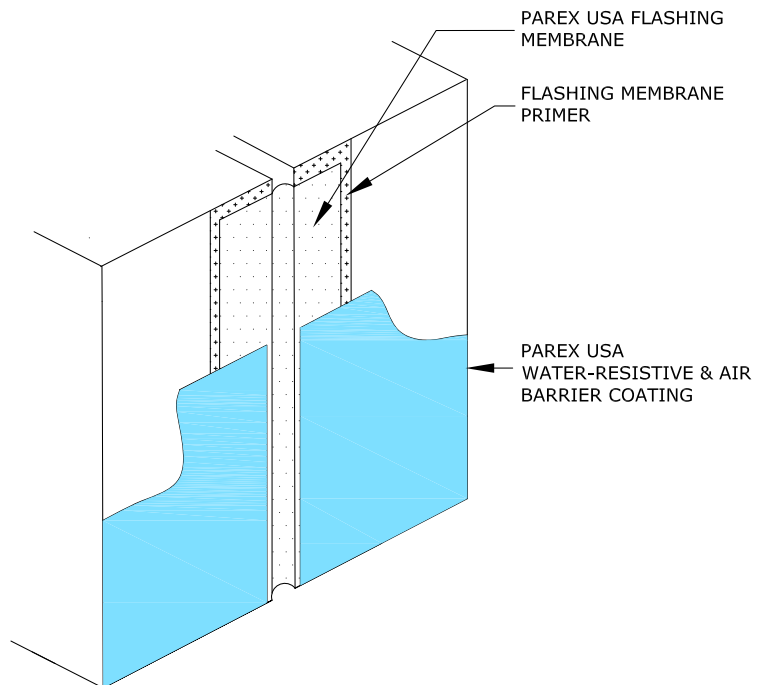
**WRB 1.17 HEAD FLASHING**

## WINDOW AND DOOR TERMINATIONS



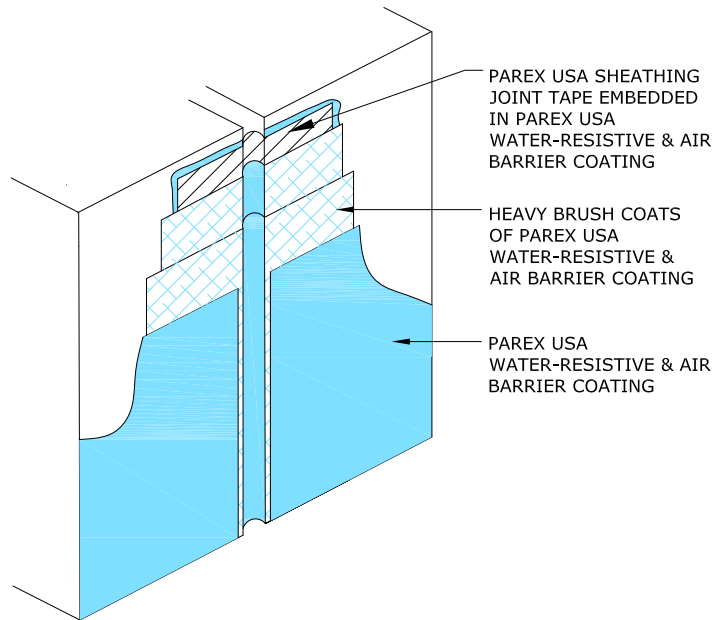
**WRB 1.18 SEAL AT MASONRY HEAD FLASHING**

## EXPANSION JOINTS



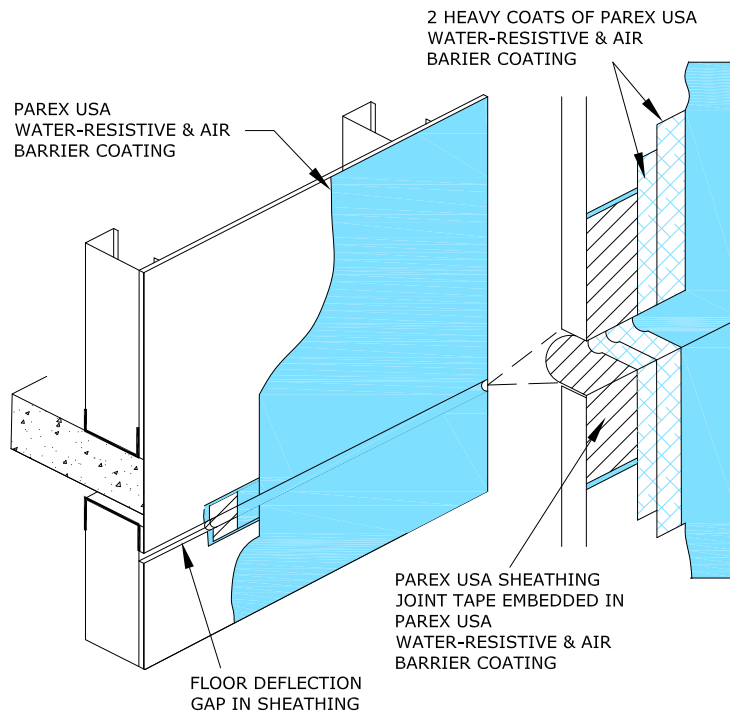
**Note:**  
Provide slack in the flashing membrane to allow for movement.

**WRB 1.19 EXPANSION JOINT A**



**WRB 1.20 EXPANSION JOINT B**

## ROOFS

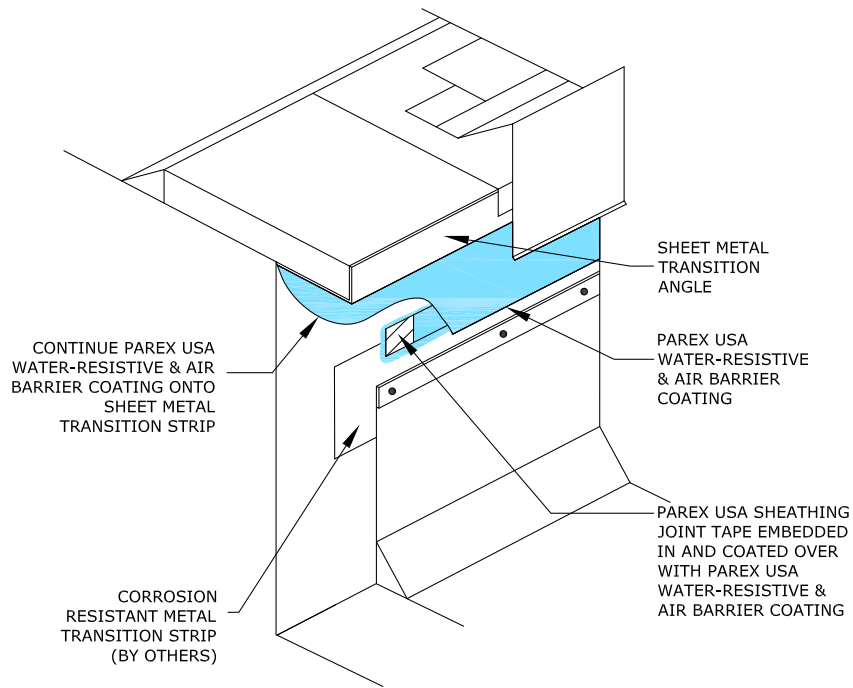


**WRB 1.21 FLOOR LINE DEFLECTION JOINTS**

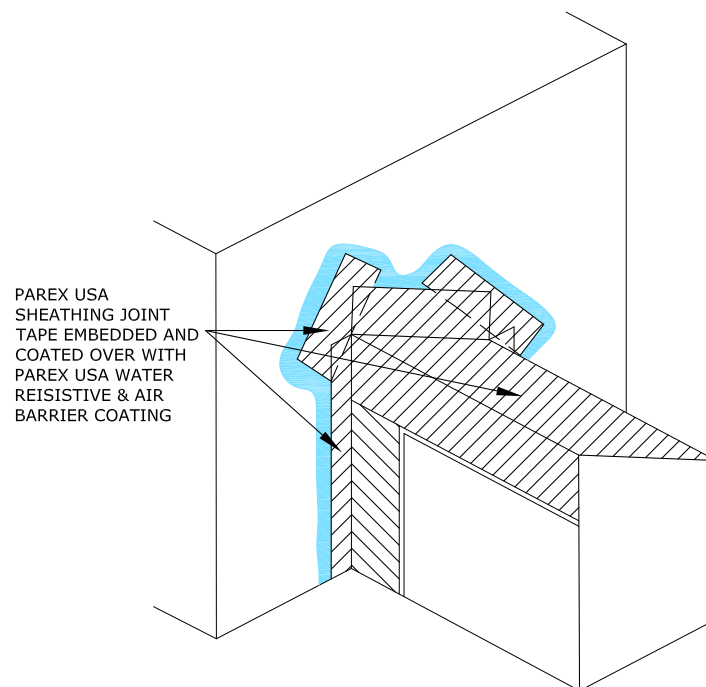
**Note:**  
Parex USA Flashing Membrane/Primer may be used as an alternative to Parex USA Reinforced Water Resistant and Air Barrier coating.

*Please refer to the note on the front cover before reviewing these details.*

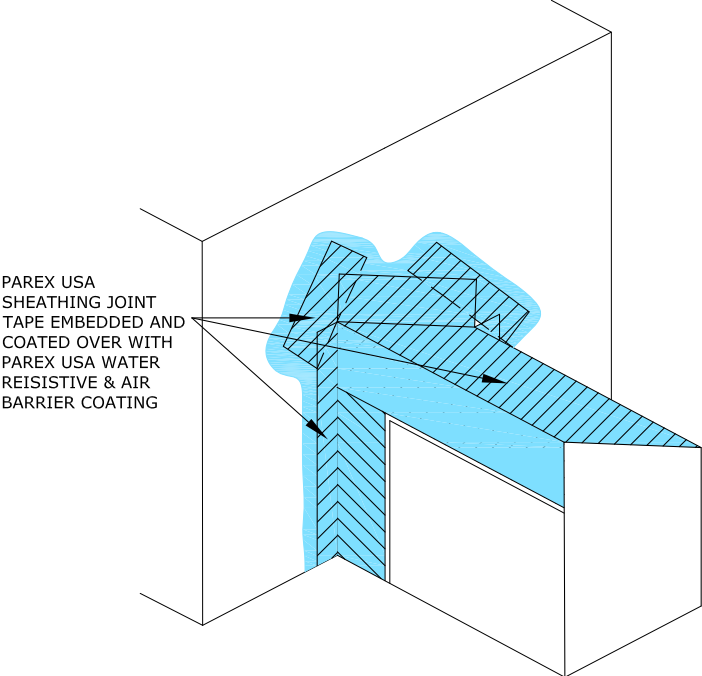
## ROOFS



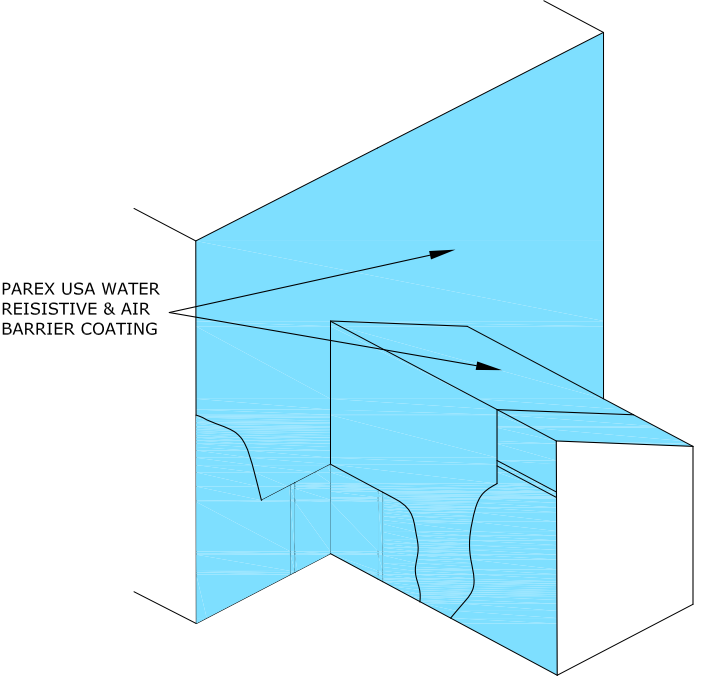
**WRB 1.22 TERMINATION AT ROOFS**



**WRB 1.23 LOW PARAPET HIGH WALL INTERSECTION - 1 OF 3**



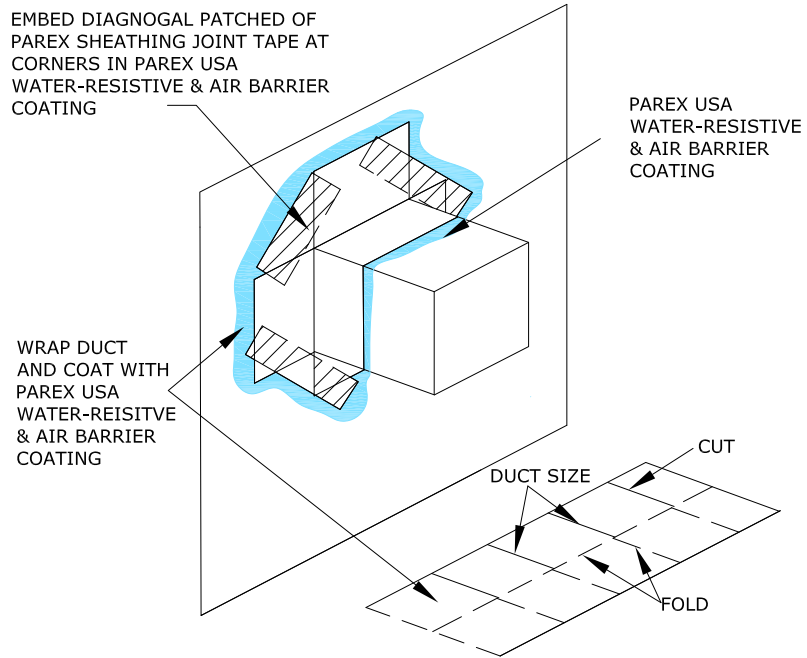
**WRB 1.24 LOW PARAPET HIGH WALL INTERSECTION – 2 OF 3**



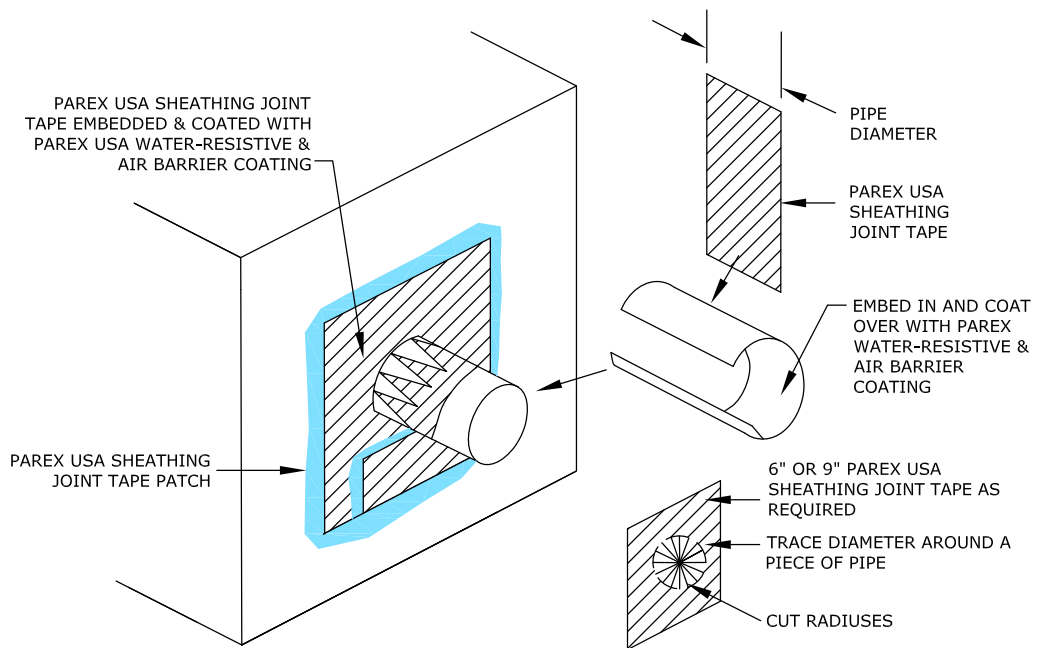
**WRB 1.25 LOW PARAPET HIGH WALL INTERSECTION – 3 OF 3**



## PENETRATIONS

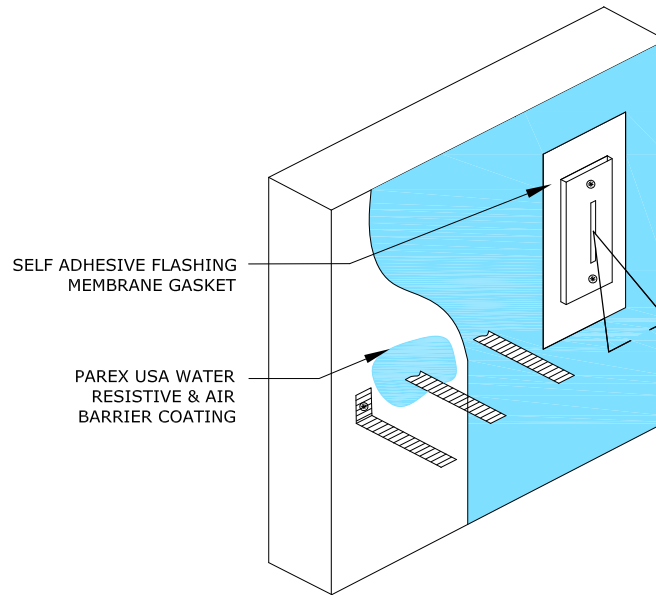


**WRB 1.26 SEAL AT DUCT PENETRATION**



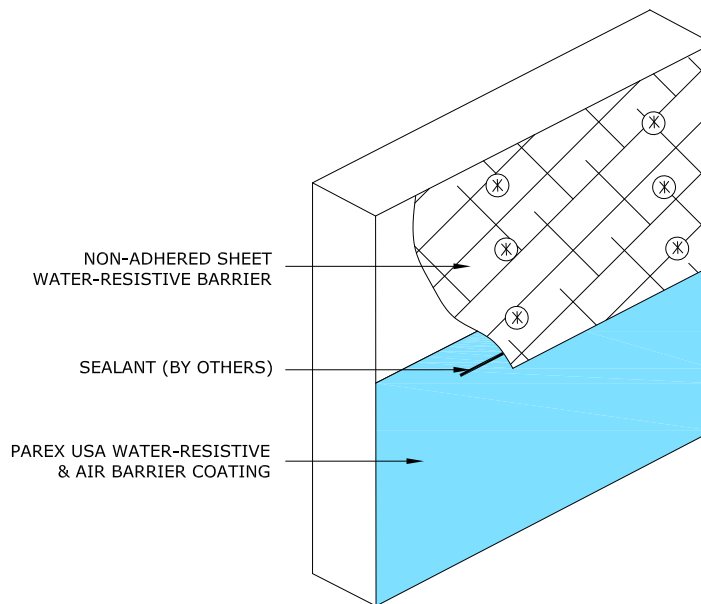
**WRB 1.27 SEAL AT PIPE PENETRATION**

**Note:**  
Contact brick anchor  
manufacturer for  
installation instructions.



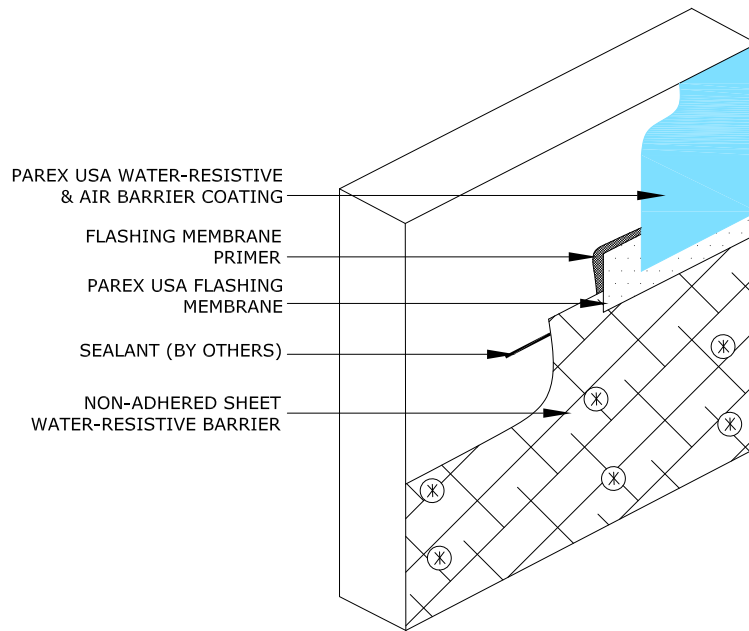
**WRB 1.28 TYPICAL APPLICATION AT BRICK TIES**

## TRANSITIONS TO DISSIMILAR WATER-RESISTIVE BARRIERS

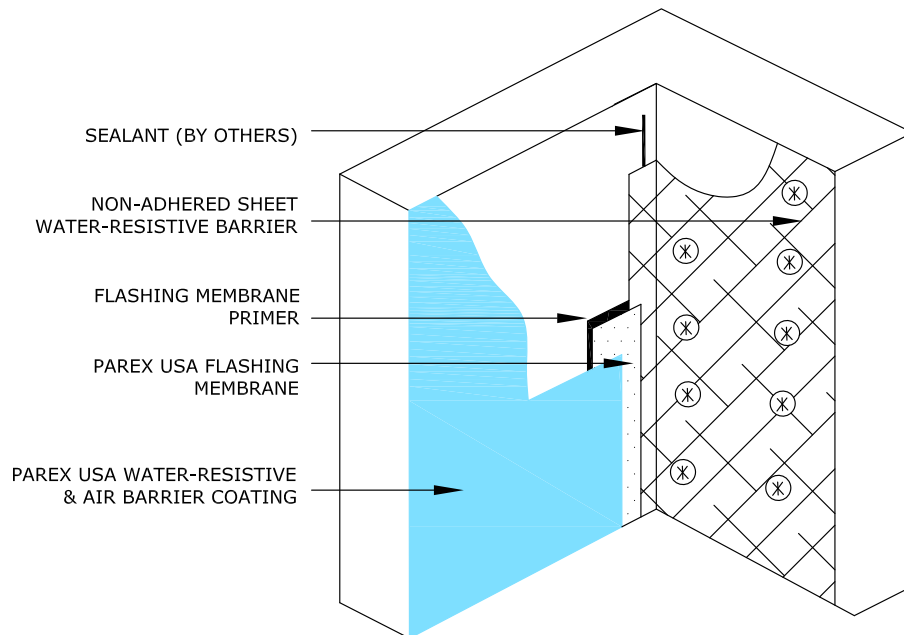


**WRB 1.29 HORIZONTAL TRANSITION TO NON-ADHERED WATER-RESISTIVE BARRIER SHEET ABOVE**

**TRANSITIONS TO DISSIMILAR  
WATER-RESISTIVE BARRIERS**



**WRB 1.30 HORIZONTAL TRANSITION TO NON-ADHERED WATER-RESISTIVE BARRIER SHEET ABOVE**



**WRB 1.31 VERTICAL TRANSITION TO NON-ADHERED WATER-RESISTIVE BARRIER SHEET**

## Parex USA Water Resistive Barriers Details

Cold-Fluid Applied Waterproofing  
CSI SECTION 07 14 16

Fluid-Applied Membrane Air Barriers  
CSI SECTION 07 27 26

**Corporate Office**

Parex USA, Inc.  
4125 E. La Palma Ave., Suite 250  
Anaheim, CA 92807  
(866) 516-0061  
Tech Support: (800) 226-2424



air barrier  
**abaa**  
association of  
america



**PAREXUSA**  
**SUSTAINABILITY**