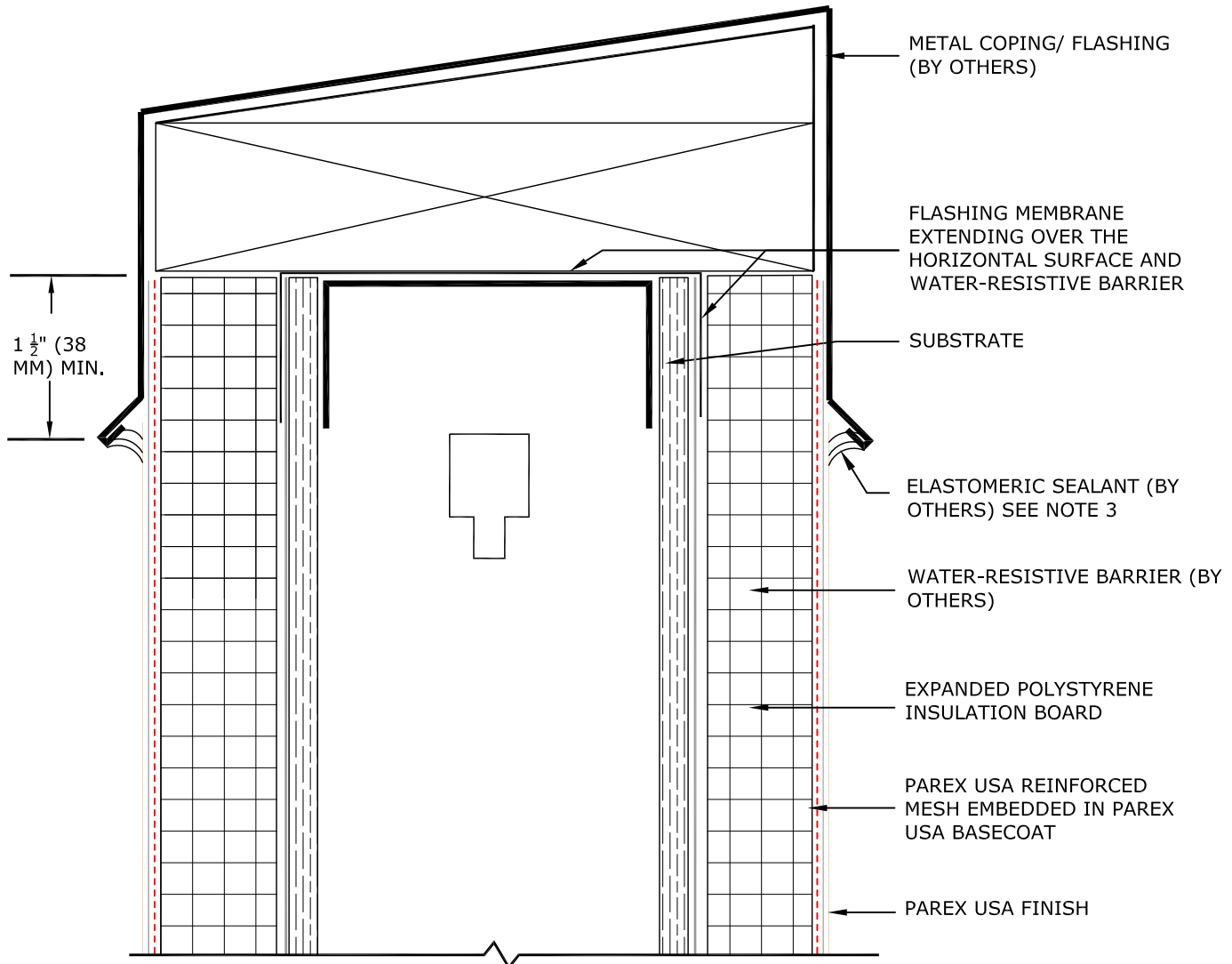


# LaHabra® INSUL-FLEX WATERMASTER LCR SYSTEM



## IF LCR R1.03 PARAPET WALL TERMINATION AT CAP FLASHING

### INSUL-FLEX WATERMASTER LCR SYSTEM

- NOTES:
1. See G 1.01 A, B or C for Drainage Options.
  2. See G 1.02 for termination Options.
  3. Some coping systems have an inner membrane that drains behind the metal flashing. Do not block drainage of these membranes with sealant.

Disclaimer: The design, specifications, and construction shall comply with all local building codes and standards. Parex USA installation guidelines are for general information and guidance only and Parex USA specifically disclaims any liability for the use of this design, and for design, engineering, or workmanship of any project. The assembly shall be designed to prevent condensation within the assembly. The designer and the user shall provide final drawings and specifications. Products shown other than those manufactured by Parex USA are shown for clarity of the Parex USA product only. Contact the manufacturer of such other products for installation instructions.