

LaHabra®



FastWall Stucco and High Efficiency Assemblies

- FastWall WaterMaster Krak-Shield
- FastWall WaterMaster
- FastWall Krak-Shield
- FastWall

PAREXUSA

LaHabra - The Single Source Stucco

The LaHabra Advantage

Since 1926, LaHabra has been known for its high-quality stucco products and services. Using LaHabra products adds underlying strength and long-term value to any property.

All products are factory-blended using rigorous production controls to ensure bag-to-bag and batch-to-batch consistency. We pride ourselves in making sure that all incoming raw materials used are tested and inspected, our computerized manufacturing assures blending accuracy and all finished products are continuously evaluated. LaHabra sets the standards for any stucco project.

Single Source Stucco Solution Provider since 1926

Whether you are looking for stucco base coats, color coat stucco finishes, acrylic finishes, elastomeric finishes or any of the stucco accessories we offer, you can count on LaHabra as your stucco solution provider.



Local Material from a Local Distributor

Parex USA has 9 manufacturing and distribution locations through-out the United States. National coverage provides the best opportunity to source materials locally, reducing time and shipping costs while also contributing toward LEED points.

These locally produced materials are serviced by local distributors who understand the market and can provide the level of service that one would expect from the leading stucco provider.

Why LaHabra FastWall Stucco Base Coats and Assemblies?

Developed by the Leading Experts in Stucco

LaHabra FastWall has the industry's most innovative, comprehensive, and advanced stucco assemblies in the market. LaHabra FastWall brings the right combination of materials and performance for today's buildings. If you're looking for protection against moisture or want to limit cracking, FastWall has the solution. All FastWall assemblies are backed by industry leading warranties. Brought to you by the leaders in stucco facades, LaHabra FastWall assemblies provide the solution you need and the performance that you demand.



Solutions Provider Since 1926.

FastWall 300 Assemblies

FastWall 300 stucco assemblies are LaHabra's superior and most popular stucco assemblies. These assemblies are designed as a replacement to job-site mixed scratch and brown base coats. FastWall 300 provides both convenience and versatility making it the leading choice for many of today's construction applications.



These assemblies consist of LaHabra Fiber-47 FastWall Scratch and Brown Concentrate or Sanded, a factory controlled high-quality blend of portland cement, lime, fibers and proprietary additives and a finish coat. LaHabra Fiber-47 FastWall Scratch and Brown is installed at 3/4 inch or thicker if required by a fire-resistance rated or STC rated assembly.

Benefits of LaHabra's FastWall 300 Stucco Assemblies include:

- Supports a wide range of uses and fire-resistant ratings as a code-conforming assembly.
- Impact resistant.
- Impervious to termites, rot and fungus.
- Greater thickness accommodates a wider variety of architectural detailing.
- Fiber reinforcement increases long-term durability.

FastWall 100 Assemblies

FastWall 100 stucco assemblies are LaHabra's most economical stucco assemblies. Use of these assemblies speeds-up application time, resulting in lower labor and material costs.



These assemblies consist of LaHabra FastWall Stucco Base Concentrate or Sanded, a factory controlled high-quality blend of portland cement, lime, fibers and proprietary additives and a finish coat. LaHabra FastWall Stucco Base is installed at 3/8 thickness. FastWall 100 assemblies are designed for use where cost and speed of construction are important.

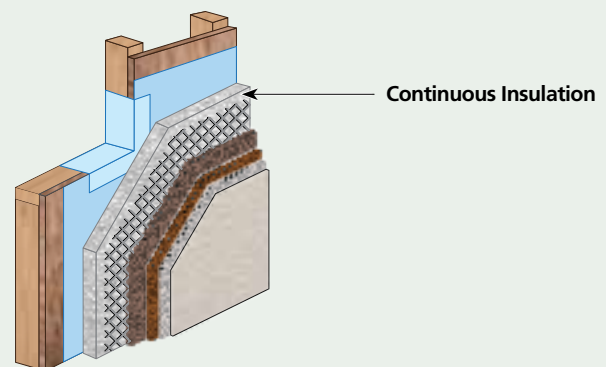
Benefits of LaHabra's FastWall 100 Stucco Assemblies include:

- Lighter assemblies.
- Faster application.
- Code-recognized assemblies offering fire-resistant ratings and a wide range of uses.
- Impact resistant and impervious to termites, rot and fungus.
- Fiber reinforcement increases long-term durability.

Want Higher Energy Efficiency?

Add the High Efficiency (HE) Feature

Stucco has been a durable and long-lasting exterior cladding for generations. Stucco provides a highly desired aesthetic appearance and a strong outer shell for a structure. Stucco clad wall assemblies can be designed with Continuous Insulation (C.I.) of either EPS, XPS or polyiso rigid foam insulations. All FastWall HE Stucco assemblies can be continuously insulated up to 2 in. thick.



Continuous Insulation (C.I.) acts as the bond breaker replacing the separation sheet otherwise required over the water-resistive barrier. HE assemblies add a very light-weight energy efficient layer of insulation that allows building designs to meet new energy efficient building requirements such as Title 24 in California.

Want Greater Water and Air Barrier Protection?

Add the WaterMaster Feature

Use Parex USA WeatherSeal Spray & Roll-On Water-Resistive and Air Barrier coating in any FastWall assembly to create the FastWall WaterMaster assembly. The FastWall WaterMaster assembly is the superior way to protect any structure.



WeatherSeal, a liquid applied water-resistive barrier provides the latest advance in water-resistive barriers and a continuous layer of moisture protection. As a continuous WRB, the risk of rips and tears that are common with sheet goods is eliminated ensuring maximum protection. WeatherSeal provides an additional benefit in that one product can be used in the field and on the joints. Many other liquid barrier systems require the use of two products which increases material usage and labor costs.

As an air barrier, WeatherSeal bridges areas where energy can be lost in a structure due to the escape and intrusion of air. Significant amounts of energy can be lost in a structure purely by the escape and intrusion of air. This decreases the energy required to maintain the desired temperature which saves money. The U.S. Department of Energy estimates that uncontrolled air leakage can account for 30% of more of a buildings energy losses.

FastWall WaterMaster stucco assemblies are the best option when looking for the most economical solution against air and water penetration of any building. Decreased energy requirements needed to maintain a desired temperature result in energy savings and environmental benefits.

Want to Limit Cracking?

Add the Krak-Shield Feature

Adding the Krak-Shield feature to any FastWall assembly increases performance and value. A layer of fiberglass mesh embedded in Parex USA Stucco Level Coat adds reinforcement and helps to limit cracking that can occur in stucco walls. By reducing unsightly cracks, LaHabra FastWall Krak-Shield reduces call-backs and maintenance costs, enhances the beauty of the building and ensures long-term owner satisfaction.

Specialty Base Coats

Due to the increased popularity in smooth finishes, LaHabra recommends using a skim coat of Parex USA Stucco Level Coat to create a smooth more uniform surface for the finish coat. Stucco Level Coat is used in all Krak-Shield assemblies to embed the mesh near the surface to reduce cracking.



LaHabra FastWall Accel-Cure, our unique base, can also be used in our FastWall 100 and 300 assemblies. It is a especially good base for smooth finishes. This speciality base is ready to accept finish after 24 hours under normal conditions and is the perfect product where fast turnaround is critical.

Finishes



FastWall 100 and 300 assemblies are easily finished with the use of:

- LaHabra Cement Stucco Finishes
- LaHabra Acrylic Finishes
- LaHabra Elastomeric Finishes
- Specialty Finishes



FastWall Assemblies Warranty

FINISH	NO PRIMER	WITH PRIMER
Exterior Color Coat Stucco Cement Finish	2 Years	N/A
Perma-Flex Stucco Grade Acrylic Finish	2 Years	4 Years
Perma-Finish EIFS & Stucco Acrylic Finish	5 Years	7 Years
Perma-Elastic Elastomeric Finish	9 Years	11 Years

FastWall Assemblies WaterMaster Warranty

FINISH	NO PRIMER	WITH PRIMER	MOISTURE PROTECTION WARRANTY
Exterior Color Coat Stucco Cement Finish	5 Years	N/A	Yes
Perma-Flex Stucco Grade Acrylic Finish	5 Years	7 Years	Yes
Perma-Finish EIFS & Stucco Acrylic Finish	7 Years	9 Years	Yes
Perma-Elastic Elastomeric Finish	11 Years	13 Years	Yes

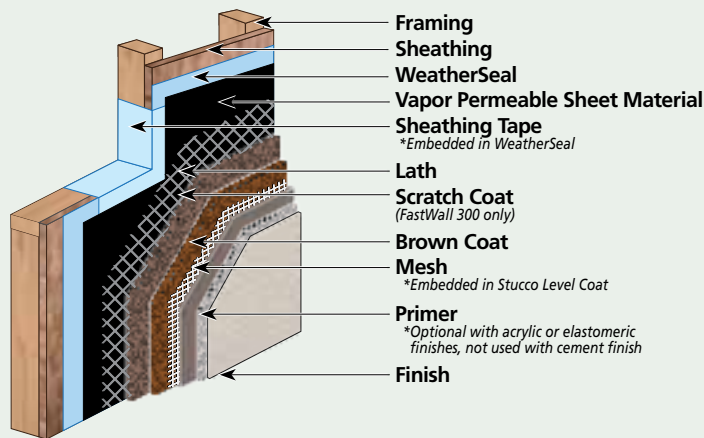
LaHabra offers an industry leading warranty program for its FastWall assemblies. The coverage offered on the assemblies varies based on the type of FastWall assembly and type of finish used.



FastWall WaterMaster Krak-Shield Assemblies:

- Protection against cracking
- Advanced moisture protection and improved energy efficiency
- Most robust assembly offered
- Additional energy efficiency of continuous insulation with the HE feature

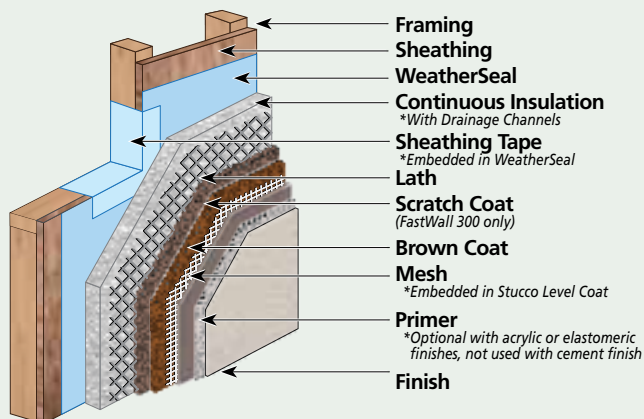
FastWall WaterMaster Krak-Shield



- Designed to be used where increased resistance to cracking, additional moisture protection and energy efficiency are desired.
- Provides superior moisture protection compared to two layers of paper/wrap.
- WeatherSeal is designed to replace one of the 2 layers of paper/wrap as prescribed by code for wood sheathing.
- This assembly can be used where an air barrier is desired or required by code.

Available in both FastWall 100 and 300 stucco assemblies

FastWall WaterMaster Krak-Shield HE (High Efficiency)

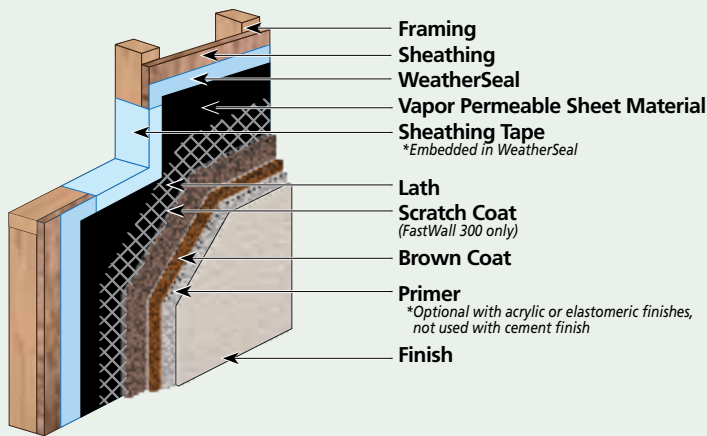


- Same assembly as above with the additional feature of rigid foam board providing continuous insulation and greater energy efficiency. The insulation board is also used to take the place of building paper acting as the bond breaker in the wall assembly.
- The use of continuous insulation in the HE assembly covers "thermal breaks" in wall assemblies and significantly enhances any structure's insulative performance and energy efficiency.

FastWall WaterMaster Assemblies:

- Advanced moisture protection and improved energy efficiency
- Additional energy efficiency of continuous insulation with the HE feature

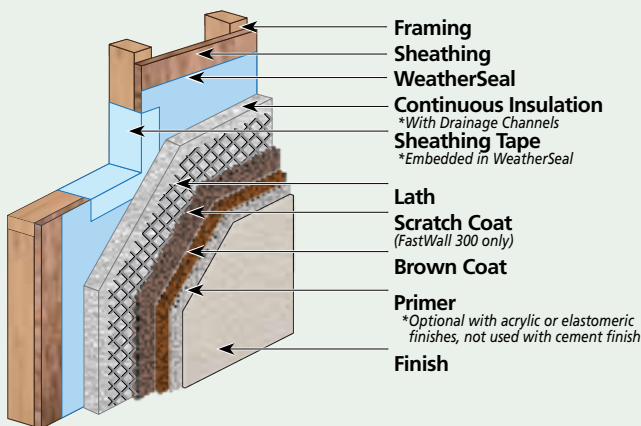
FastWall WaterMaster



- Provides superior moisture protection compared to two layers of paper/wrap.
- WeatherSeal is designed to replace one of the 2 layers of paper/wrap as prescribed by code for wood sheathing.
- This assembly can be used where an air barrier is desired or required by code.

Available in both FastWall 100 and 300 stucco assemblies

FastWall WaterMaster HE (High Efficiency)



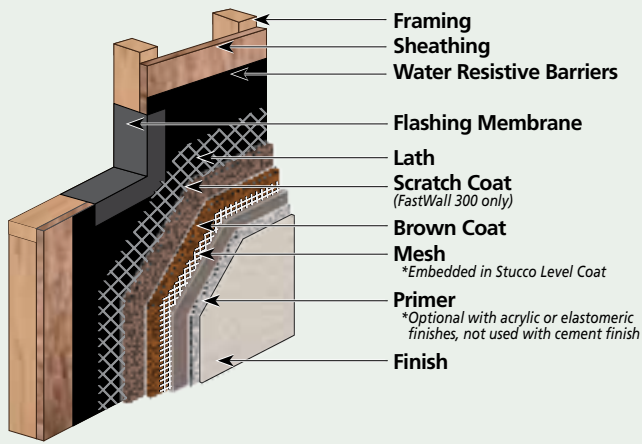
- Same assembly as above with the additional feature of rigid foam board providing continuous insulation and greater energy efficiency. The insulation board is also used to take the place of building paper acting as the bond breaker in the wall assembly.
- The use of continuous insulation in the HE assembly covers "thermal breaks" in wall assemblies and significantly enhances any structure's insulative performance and energy efficiency.

These drawings are for illustrative purposes only and are not a substitute for LaHabra specifications and detail drawings. Always use the latest complete assembly specifications and drawings available at www.lahabrastucco.com.

FastWall Krak-Shield Assemblies:

- Protection against cracking
- Additional energy efficiency of continuous insulation with the HE feature

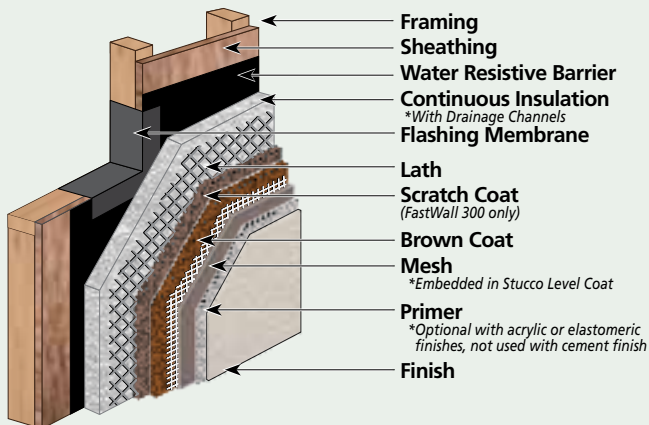
FastWall Krak-Shield



- Designed to be used where increased resistance to cracking is desired.
- This system is to be used if an air barrier is not desired.

Available in both FastWall 100 and 300 stucco assemblies

FastWall Krak-Shield HE (High Efficiency)

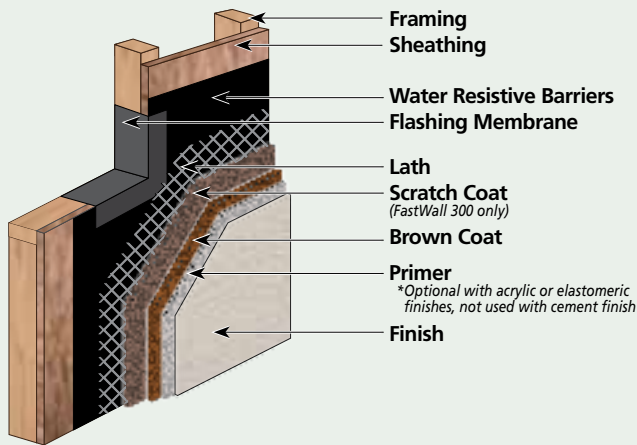


- Same assembly as above with the additional feature of rigid foam board providing continuous insulation and greater energy efficiency. The insulation board is also used to take the place of one layer of building paper when the remaining layer has "60 minute" water resistance.
- The use of continuous insulation in the HE assembly covers "thermal breaks" in wall assemblies and significantly enhances any structure's insulative performance and energy efficiency.

FastWall Stucco Assemblies:

- An advanced stucco assembly
- Additional energy efficiency of continuous insulation with the HE feature

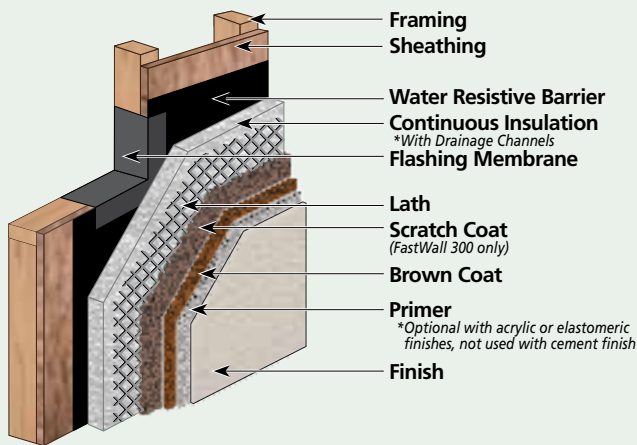
FastWall



- Designed for use over framed construction when a standard assembly is desired.
- This system is to be used if an air barrier is not desired.

Available in both FastWall 100 and 300 stucco assemblies

FastWall HE (High Efficiency)



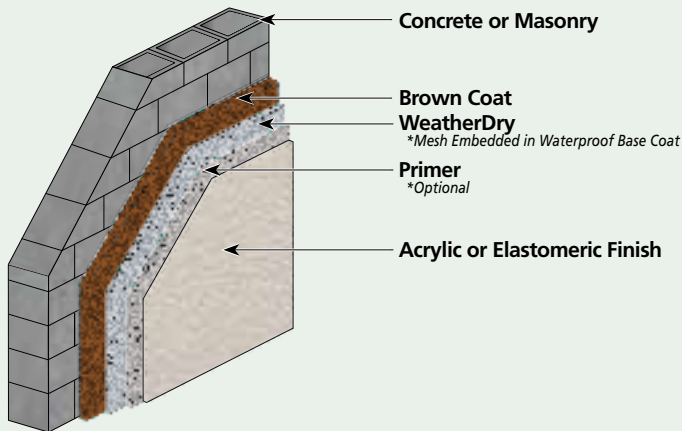
- Same assembly as above with the additional feature of rigid foam board providing continuous insulation and greater energy efficiency. The insulation board is also used to take the place of building paper when the remaining layer has "60 minute" water resistance.
- The use of continuous insulation in the HE assembly covers "thermal breaks" in wall assemblies and significantly enhances any structure's insulative performance and energy efficiency.

These drawings are for illustrative purposes only and are not a substitute for LaHabra specifications and detail drawings. Always use the latest complete assembly specifications and drawings available at www.lahabrastucco.com.

FastWall WaterMaster Concrete or Masonry

- Assembly for FastWall WaterMaster over concrete or masonry
- Advanced moisture protection and improved energy efficiency
- Additional energy efficiency of continuous insulation with the HE feature

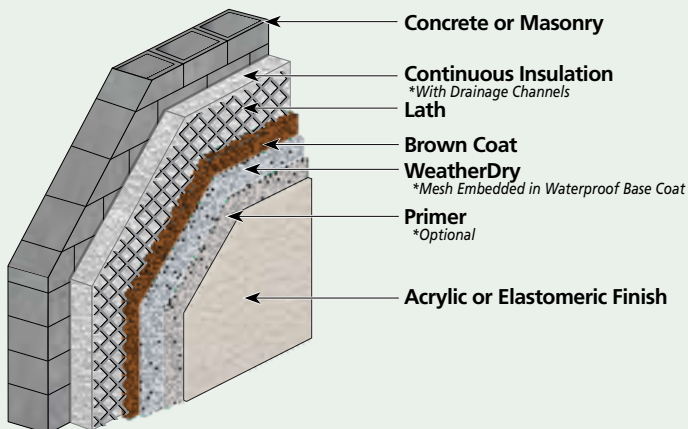
FastWall WaterMaster Concrete or Masonry



- Designed for either concrete or masonry walls where the aesthetic appeal of stucco is desired.

Available in both FastWall 100 and 300 stucco assemblies

FastWall WaterMaster Concrete or Masonry HE (High Efficiency)

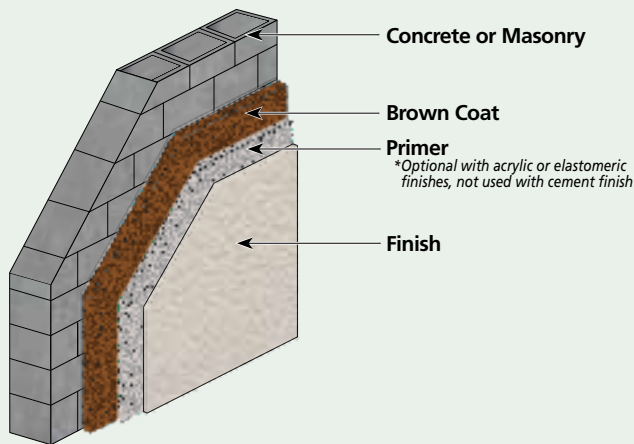


- Same assembly as above with the additional feature of rigid foam board providing continuous insulation and greater energy efficiency.
- The use of continuous insulation in the HE assembly covers "thermal breaks" in wall assemblies and significantly enhances any structure's insulative performance and energy efficiency.

FastWall Concrete or Masonry

- Assembly for FastWall over concrete or masonry
- Additional energy efficiency of continuous insulation with the HE feature

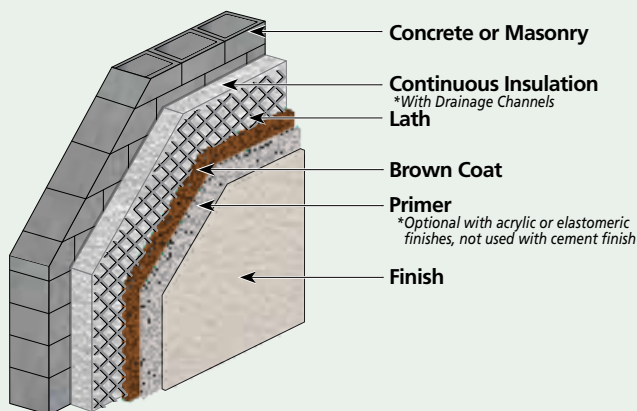
FastWall Concrete or Masonry



- Designed for over either concrete or masonry walls where the aesthetic appeal of stucco is desired.

Available in both FastWall 100 and 300 stucco assemblies

FastWall Concrete or Masonry HE (High Efficiency)



- Same assembly as above with the additional feature of rigid foam board providing continuous insulation and greater energy efficiency.
- The use of continuous insulation in the HE assembly significantly enhances any structure's insulative performance and energy efficiency.

These drawings are for illustrative purposes only and are not a substitute for LaHabra specifications and detail drawings. Always use the latest complete assembly specifications and drawings available at www.lahabrastucco.com.

Components



WATER-RESISTIVE BARRIER

WeatherSeal: An industry leading waterproof membrane for use as a water-resistive & air barrier in LaHabra WaterMaster assemblies.

WeatherDry: An acrylic co-polymer based, waterproofing base coat with mesh embedded for use with acrylic and elastomeric finishes. Requires the addition of portland cement. Used in concrete and masonry assemblies.

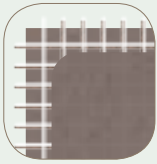


STUCCO BASE

LaHabra FastWall Stucco Base: FastWall Stucco Base is a factory controlled high-quality blend of portland cement, lime, fibers and proprietary additives. LaHabra FastWall Stucco Base is installed at 3/8 thickness. Used in FastWall 100 assemblies.

Fiber-47 FastWall Scratch & Brown: FastWall Stucco Base is a factory controlled high-quality blend of portland cement, lime, fibers and proprietary additives that conform to ASTM C926. Used in FastWall 300 assemblies.

FastWall Accel-Cure: Our unique base can be used in both FastWall 100 and 300 assemblies. This specialty base is ready to accept finish after 24 hours under normal conditions and is an especially good base for smooth finishes.



STUCCO LEVEL COAT & MESH (For Krak-Shield Assemblies)

Stucco Level Coat: Used to smooth a wall's surface in preparation for primer or finish and to embed Parex USA mesh in LaHabra Krak-Shield stucco assemblies.

Mesh: Parex USA 4.5 oz. or 12 oz. fiberglass mesh: used in LaHabra Krak-Shield assemblies to limit cracking.



PRIMERS

LaHabra Perma-Primer: A tintable acrylic primer that can be applied by roller or sprayer. Use Perma-Primer to improve the handling, texturing and coverage of acrylic or elastomeric finishes. Not to be used with cement finishes.



FINISHES

LaHabra offers a number of finish options for your FastWall stucco assembly.

- **Exterior Stucco Color Coat Cement Finish:** Provides a lasting, durable color finish over LaHabra stucco bases. It is integrally colored with fade-resistant pigments, and is economical with low maintenance. Product is available in 16/20, 20/30 aggregates and smooth Santa Barbara Mission finishes.
- **Perma-Flex Stucco Grade Acrylic Finish:** Integrally colored acrylic finish available in 4 textures: Fine, Coarse, Smooth and Swirl.
- **Perma-Finish EIFS & Stucco Acrylic Finish:** Integrally colored premium acrylic finish available in 4 textures: Fine, Coarse, Smooth and Swirl. Perma-Finish EIFS & Stucco Acrylic Finish is our high-end acrylic finish that offers easier application and improved durability.
- **Perma-Elastic Elastomeric Finish:** Integrally colored elastomeric finish available in 3 textures: Fine, Coarse and Swirl. Elastomerics offer the ability to bridge existing hairline cracks to improve the long-term aesthetics of any wall.
- **Select Finish:** A variety of specialty, high-end designer finishes that provide a unique and distinctive appearance (see brochure).



LaHabra[®]
www.lahabrastucco.com

Corporate Office

Parex USA, Inc.
4125 E. La Palma Ave., Suite 250
Anaheim, CA 92807
(866) 516-0061
Tech Support: (800) 226-2424

Facilities

Riverside, CA
French Camp, CA
Albuquerque, NM
Colorado Springs, CO
Anaheim, CA

North Hollywood, CA
San Antonio, TX
Redan, GA
Wilkes Barre, PA

